

The image shows a rehearsal studio with a dark, geometric wall. The wall is composed of dark, rectangular panels arranged in a grid pattern. A horizontal metal truss structure runs across the middle of the frame. Several vertical light strips are attached to the wall, emitting a warm, yellowish light. The lighting creates a rhythmic pattern of light and shadow across the wall. The overall atmosphere is modern and professional.

**19
INCH
BROS**

Rehearsal Studio



STUDIO

Dimensions: 16,00 x 16,00 m
 Clearance: 6,12 - 6,95 m
 Total load capacity: 7t
 Loading door: 4,00 x 4,50 m (w x h)
 Electrical power: 2 x 125A CEE
 2 x 63A CEE
 2 x 32A CEE
 2 x 16A CEE

Fork Lift/Cherry Picker

Molton slope

Acoustic diffuser ceiling

Underfloor heating

completely dark

Rehearsal times: 24 hours a day
 7 days a week

FACILITIES

Lounge & Kitchen 47m²

Production office 23m²

Control room 32m²

Shower

Toilets

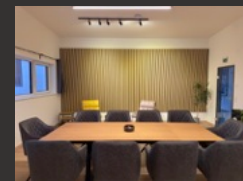
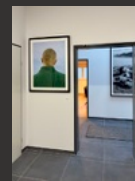
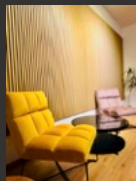
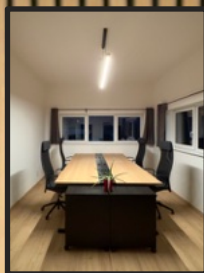
Terrace

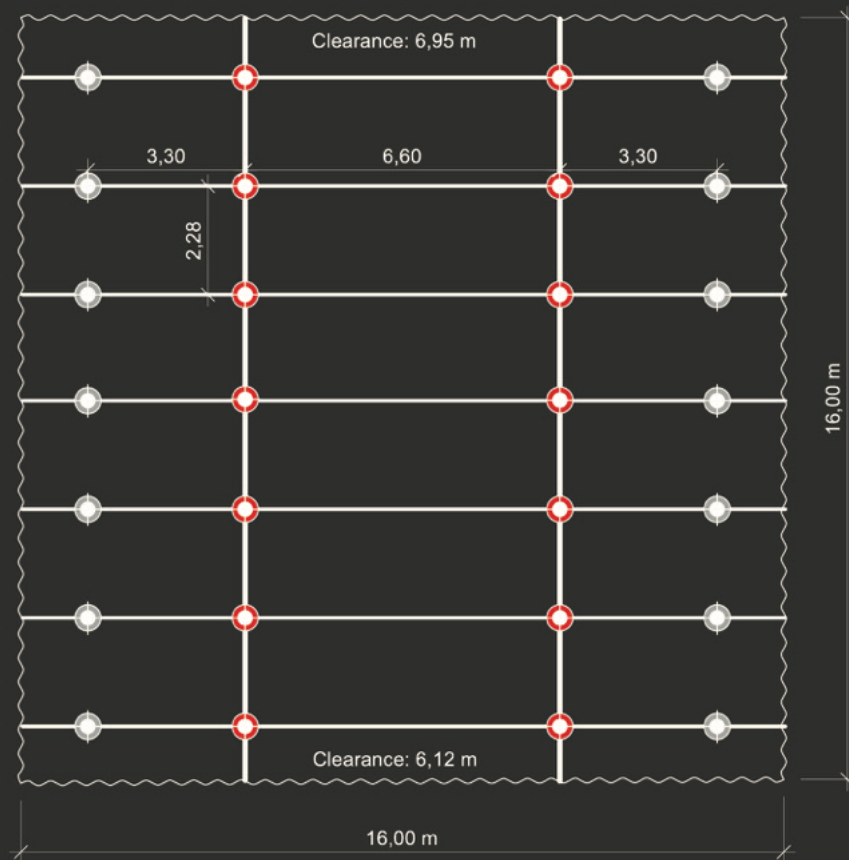
PARKING

2x Nightliners incl. Power

2 x Trucks

4 x Vans





Rigging points:

● 1000 kg

● 500 kg

Total load capacity: 7t

Rigging

Overview

The Rehearsal Studio, located near the city of Graz, offers the ideal space for production rehearsals, preparing work, and band rehearsals that require plenty of room for creative development.

The space is also ideal for training sessions, workshops, and demo events showcasing technical equipment.

An acoustically optimized ceiling, carpeted floor, and molton drapes ensure a balanced and pleasant sound environment.

The entire hall, as well as all adjacent rooms, is equipped with underfloor heating, providing a comfortable working atmosphere even during the colder seasons.

Upon request, the studio can be equipped with a dance floor and a mobile mirror wall, making it perfectly suited for all kinds of choreography rehearsals.

A dedicated control room provides the ideal workspace for audio engineers, while lighting engineers benefit from an undisturbed and spacious working environment directly in the hall.

The studio's adjacent rooms include a spacious lounge with a kitchen area, a production office, a large terrace, and modern restroom and shower facilities.

Additional Services

On request, we can organize:

- Backline, audio, lighting, video, staging, and riser equipment rentals through our partner companies
- Catering services
- Train station and airport transfers for crew and artists

Accommodation

Located in a renowned spa region, numerous apartments, guesthouses, and hotels are available within a 15-minute drive.

For any questions or individual offers, please get in touch at:

info@19inchbros.com

CONTACT

info@19inchbros.com

ADDRESS

19 INCH BROTHERS GmbH
Neudorf 207A
8262 Ilz

www.19inchbros.com

